

CI/SfB
CAW
Uniclass

Description

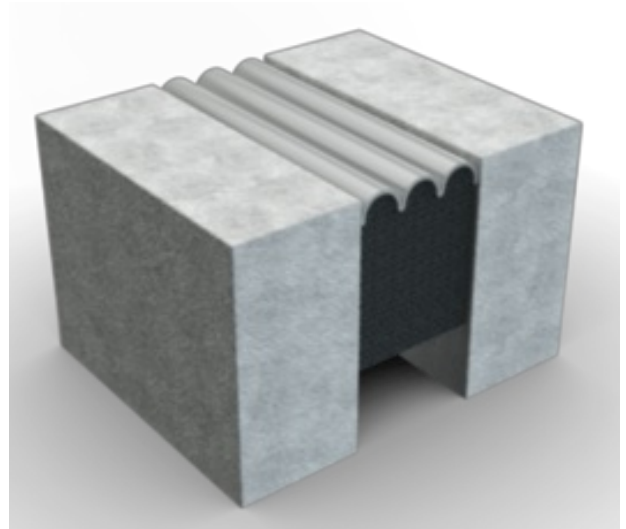
Willseal 250 is a pre-compressed, self-expanding open micro-cell polyurethane foam impregnated with a hydrophobic, acrylic polymer sealing compound coated with a factory-applied silicone sealant. It is designed to provide a watertight, dust-proof, airtight, noise-reducing, thermally insulating, and UV stable primary seal that does not require invasive anchoring for installation.

Packaging

Joint width (mm)	Joint depth (mm)
13	51
16	51
20	51
25	51
32	51
38	51
45	51
51	76
57	76
64	76
70	76
76	76

Technical data

Property	Test Method	Result
UV resistance	DIN 18542	Pass
Ultimate elongation	N/A	Exceeds rated maximum extension without tension
Surface temperature range	ASTM C711	-40°C to +87.7°C
Silicone elongation	N/A	Never under tension and exceeds maximum movement range (>1000%)
Silicone flexibility	N/A	Excellent
Resistance to compression set	Full cycle tested in an environmental chamber through the stated temperature stability range	No bleeding when compressed to minimum of claimed movement of normal size and when simultaneously heated to 87.7°C for 3 hours.
Compression set	Full cycle tested in an environmental chamber through the stated temperature stability range	Will not delaminate due to thermal shock or compression set
Temperature stability range		-40°C to +80°C
Ideal storage temperature		20°C
Shelf life		6 months



TW200

Willseal 250

Typically used as an external joint sealant, engineered to perform in horizontal applications subject to solvents and fuels such as those found in parking garages, road and bridge joints, and airport runways. The following are acceptable applications for Willseal 250:

- Primary horizontal expansion for vehicular traffic
- Primary horizontal expansion for pedestrian traffic
- Parking garages
- Stadiums
- Plaza Decks on grade
- Airport taxiways and runways

Benefits

- Allows for up to 100% ($\pm 50\%$) movement
- Accommodates rapid rates of joint movement
- Supplied in pre-compressed state for ease of installation
- Utilizes non-invasive anchoring
- Not based on wax, asphalt or bitumastic impregnation
- Monolithic construction – no unbonded laminations

Preparation

- Verify that the joint is clean, sound, and will provide an appropriate surface for installation of the joint sealant.
- Use compressed air to clean any loose debris from the joint.
- Apply water or alcohol to a clean cloth and wipe the joint walls to the depth of the sealant material plus 25 mm.
- Verify that the joint is uniform and repair any spalls prior to installation.
- Check the material for appropriate length, width, and depth.
- Supplied material should be pre-compressed to a size smaller than the intended joint opening.
- Joint depth must allow for the installed material to be recessed 6 mm from the substrate surface.

Usage Guidelines

Application procedure

- When fully prepared to install, apply a 1,5 - 3 mm coating of the epoxy mixture to both joint walls using a 25 mm margin trowel to a depth of the sealant material plus 13 mm
- The epoxy must still be wet upon installation of Willseal 250; The working time for epoxy is approximately 30 minutes depending on the temperature
- If the epoxy hardens on the surface of the substrate before installation, another coat of epoxy can be applied within 2 hours. After 2 hours, the substrate surface must be abraded to eliminate the amine blush that occurs during the final cure
- Cut the shrink packaging along the edge of the Masonite strapping
- Verify that the material is cut square at both ends for proper seams; all pieces must be square to the termination point
- Pay attention to the direction of insertion marked on the packaging
- Be prepared to install the material immediately once the packaging is removed to prevent the material from expanding past the joint width
- Recess joint 6 mm from the substrate surface

Joints, Sidewall and Finishing Work

- Verify that the new piece of material is cut square and not at an angle to the previous piece installed
- Apply supplied join splice adhesive to the butt end of the new piece of material
- Do not apply join splice adhesive to the faces of the product that are in contact with the epoxy
- Overlap extra material (approximately 13 to 25 mm) at seams and splices to ensure that the seam is in compression after installation
- Make sure seams are flush against each other and then push the pieces together
- Butt seam all "T" and "+" intersections
- Once the joint is installed, run and tool a 6 mm bead of the supplied silicone along both sides of the face of the joint along the substrate face
- Run and tool the supplied silicone accessory over all seams and transitions to allow for a clean, aesthetic finish
- Remove any excess adhesive material left on the surface of the material substrate; do not allow the excess adhesives to cure

Please Note

- Avoid contact of Willseal 250 with hydrocarbon solvents, solvent based paints, and corrosive chemicals.
- Do not install when substrate or ambient temperatures are below -25°C or above 35°C.
- Willseal 250 not adhere to surfaces contaminated by oil or grease. Concrete should clean, dry & sound.
- Store material in a dry, enclosed area, off the ground, and out of direct sunlight at 20°C minimum

Technical Service

tremco illbruck has a team of experienced Technical Service Representatives who provide assistance in the selection and specification of products. For more detailed information, service and advice, please call Customer Service on 01942 251400

Guarantee / Warranty

tremco illbruck products are manufactured to rigid standards of quality. Any product which

has been applied (a) in accordance with tremco illbruck written instructions and (b) in any application recommended by tremco illbruck, but which is proved to be defective, will be replaced free of charge. No liability can be accepted for the information provided in this leaflet although it is published in good faith and believed to be correct. tremco illbruck Ltd. reserves the right to alter product specifications without prior notice, in line with Company policy of continuous development and improvement.



tremco illbruck Limited
 Coupland Road, Hindley Green
 WN2 4HT Wigan
 United Kingdom
 T: +44 1942 251400
 F: +44 1942 251410

uk.info@tremco-illbruck.com
 www.tremco-illbruck.co.uk